

# EYE3-VTracker (1/4 Channel)

## Introducing EYE3-VTracker

Eye3-VTracker, a mobile device integrates GPS and Video/Audio streaming into one powerful and easy to deploy solution. The device is available with 1 or 4 cameras, uses H.264 Video compression for high-performance and captures between 40 and 80 hours of audio/video on a 16 gigabyte solid state storage device. Our Central Management Software provides Live Remote view of all vehicles in your fleet over WIFI or Cellular 3G Networks. Video/Audio data can be downloaded to a USB device and reviewed using our Playback/Analysis software.

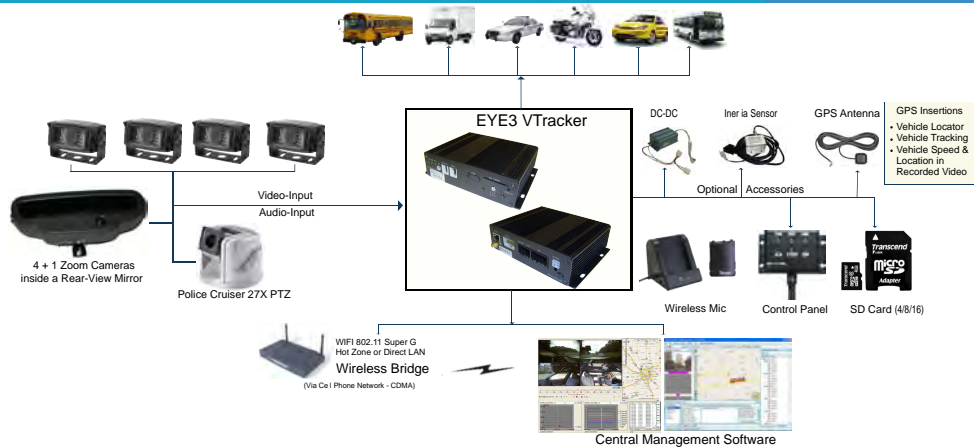


- Dual streaming transfer provides excellent performance (H 264 for streaming and MPEG4 for recording)
- 1 or 4 Channels of Video and Audio Recording
- Solid State Storage Device (4 Gig – 16 Gig)
- Inertia Sensor Module (optional)
- Wireless download of Events/Video Data to Server (Routers required)
- Live Remote View (GPS + Video) with 3G Network Air-card
- Video/Events download to USB thumb drive
- GPS Vehicle location and speed tracking
- Panic Button to create Emergency Events
- Vehicle communicates with Central Station using Instant Alarm Notification
- Advanced Central Management Software (tracks entire Fleet)
- Easy to use but powerful Playback/Analysis Software
- Alarm Input - 6 in / 2 out (Panic, Brake, Turning, Hazard, etc)

## Features

System	OS	Linux 2.6 (Stable Operating System)
	Operation Interface	Hand-held, IR controller with On-Screen Display (OSD) for all operations of the MDVR
	Storage	SD Card (Minimum 1 GB)
	Video System	NTSC / PAL
	Input Voltage	12 V/1 A
Video	Camera Input	1 / 4 camera
	Display	1 / 4 Video Window Screen
	Image Quality	8 - Level Adjustable
	Fwd/Playback speed	x2, x4, x1/2, x1/4
	Stream Standard	ISO14496
	Record Resolution	Selectable recording resolutions ( CIF, half D1 ) PAL: CIF(360x288), half D1 (720x288) NTSC: CIF(360x240), half D1 (720x240)
Audio	Video Compression	H.264 ( 4.8K-256KB/s)
	Max FPS	25 / 30 fps (25/30 fps/CH at CIF, 12.5/ 15 fps/CH at HD1, 6.25/7.5 fps/CH at D1)
	Display Res.	TV monitor 720x576 / 720x480 pixels (D1)
	Audio Input	1 (mono)
I/O Interface	Audio Output	1 (mono)
	Audio Compression	AMR
	LAN	1(RJ-45) 10M / 100M Ethernet connector
Network	USB	Support USB Technology (USB1.0)
	Serial	RS-232x2
Alarm	Protocol	TCP / IP
	Input	6 sensors (6 in / 2 out)
Power Req.	Multi-mode	Auto-reset after power-break, auto-alarm when missing signal input
	Ignition Switch	Ignition power on / auto shutdown delay after ignition power off
	Power Consumption	12 V DC. Typical 12 V DC @ 5A, 24V DC@3A

# Technical Specification



Physical Characteristics	Height	1 11/16"
	Width	6 1/2"
	Depth	4 5/8"
	Weight	1.4 lb (.65kg)
Recording Option	Record Mode	Manual, Continuous, Schedule, Event, Pre-Event recording
Others	Storage Mode	SD Card (Minimum 1 GB)
	Time Clock	Built-in clock, perpetual calendar
	GPS Function	Optional for build-in module with GPS antenna
	Wireless Communication	Verizon/Sprint Air card
	Time Synch	EDGE/GPRS/CDMA wireless transmission GPS Time Synch
Environment	Operating Temp.	-40° C -40° C (with out HDD), 0~40 C (with HDD)
	Relatively Humidity	80%
	Vibration Resistance	< 10 Grms

## Optional Items

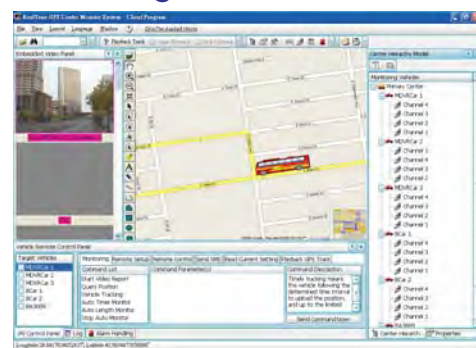
	Inertia Sensor	E3-200-148		GPS	E3-200-145
	DC-DC	E3-200-150		SD-Card (4/8/16)	E3-200-157 (4G) E3-200-158 (8G) E3-200-158 (16G)

## Video Analysis Application



- Analysis Dashboard Quad View (Video, GPS, Speed, Events)
- Ability to play Video and/or Events downloaded to a USB drive
- Import custom Maps or Google Maps to view exact location of vehicle
- Driver Behavior Management using Inertia Sensor Output
- List of all sensor driven events
- Video Play synchronized with Audio and other Text Display
- Export Images to .bmp and Video to .avi file

## Central Management Software



- CMS (Central Management Software) allows live monitoring of vehicles
- Provides exact location of vehicle using built-in GPS software
- Instant Alarm notification - Video is displayed when alarm is triggered

## Applications

School Buses, Transit Buses, Delivery/Moving Trucks, Utility Vans, Taxi-Cabs, Ambulances, Armored Trucks, Yachts