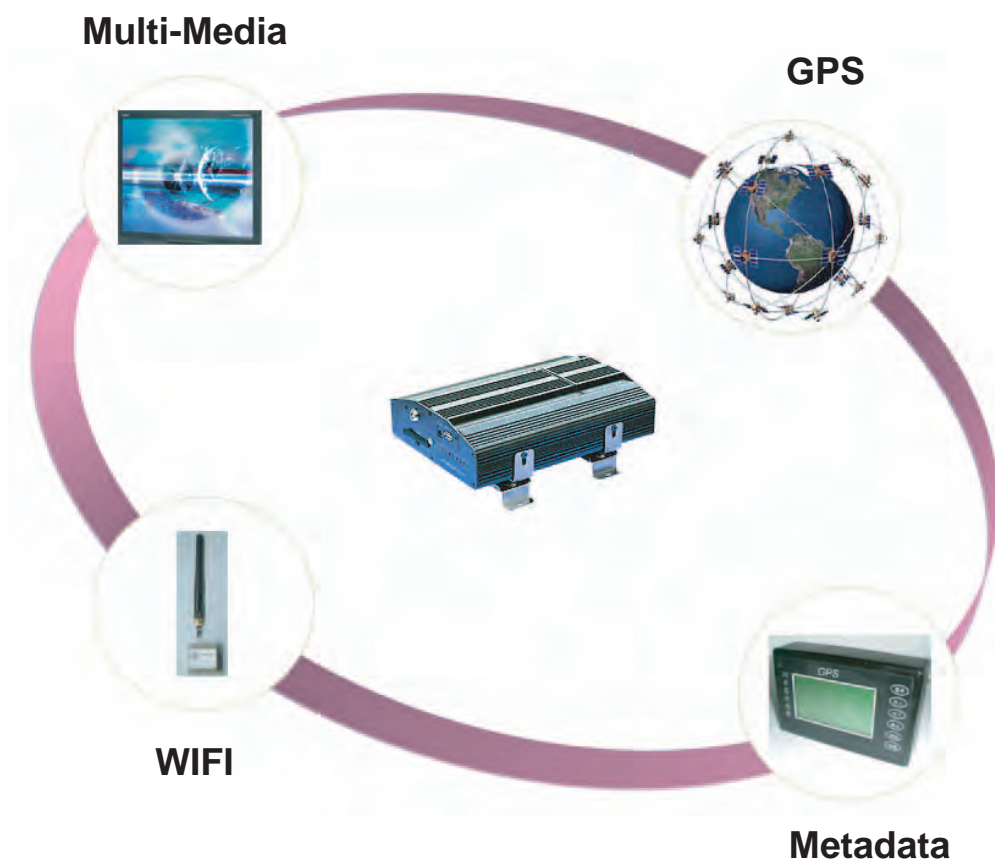


Eye3-Witness DVR

ADVANCED DIGITAL SOLUTIONS



4/8-Channels - 120/240 FPS Eye3-Witness DVR



- All in One -

Eye3-Witness + Multimedia + GPS + Metadata + Wireless

PROVEN - ECONOMICAL - FEATURE RICH

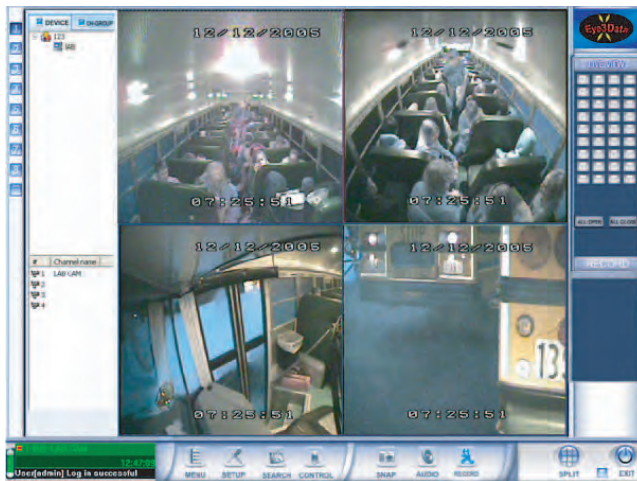
SCALABLE
RELIABLE
EXTENSIBLE

Eye3Data offers Eye3-Witness, a 4 or 8 camera 120 or 240 fps Mobile Digital Video and Audio system for the Transportation and Public Safety industries (Police Cars, Fire Trucks, Taxis, Trains and Buses). The unit is housed in a small but rugged, vibration and shock resistant case, providing 24 days of recording on a removable or built-in hard drive (upto 500GB) and a built-in multi-media application. These and many other features make the Eye3-Witness system an excellent choice for providing security on school buses, taxis, trains or used as an In-Car Police video system.

The ability to record both video and audio at full 30 fps per camera with MPEG4 compression, makes the Eye3-Witness a powerful and high performance DVR in its own right. In addition, the Eye3-Witness comes packed with many other features, such as wireless audio recording, GPS to track location and speed, a panic button to instantly record emergency events on the vehicle, Inertia Sensor to monitor driver behavior, wireless connectivity to download video/events while in a WIFI zone and the ability to download events to a CF Card.

Additionally, the Eye3-Witness allows playing of multi-media applications (Movies, Music) while the system is recording video. This feature makes the application extremely attractive for customers, who can now use this feature to generate advertising revenues from commercials, or provide customers traveling on long trips with on-board entertainment.

The system comes with a sophisticated analysis client software and central management software which is SQL*Server based to manage and monitor 1000's of vehicles.

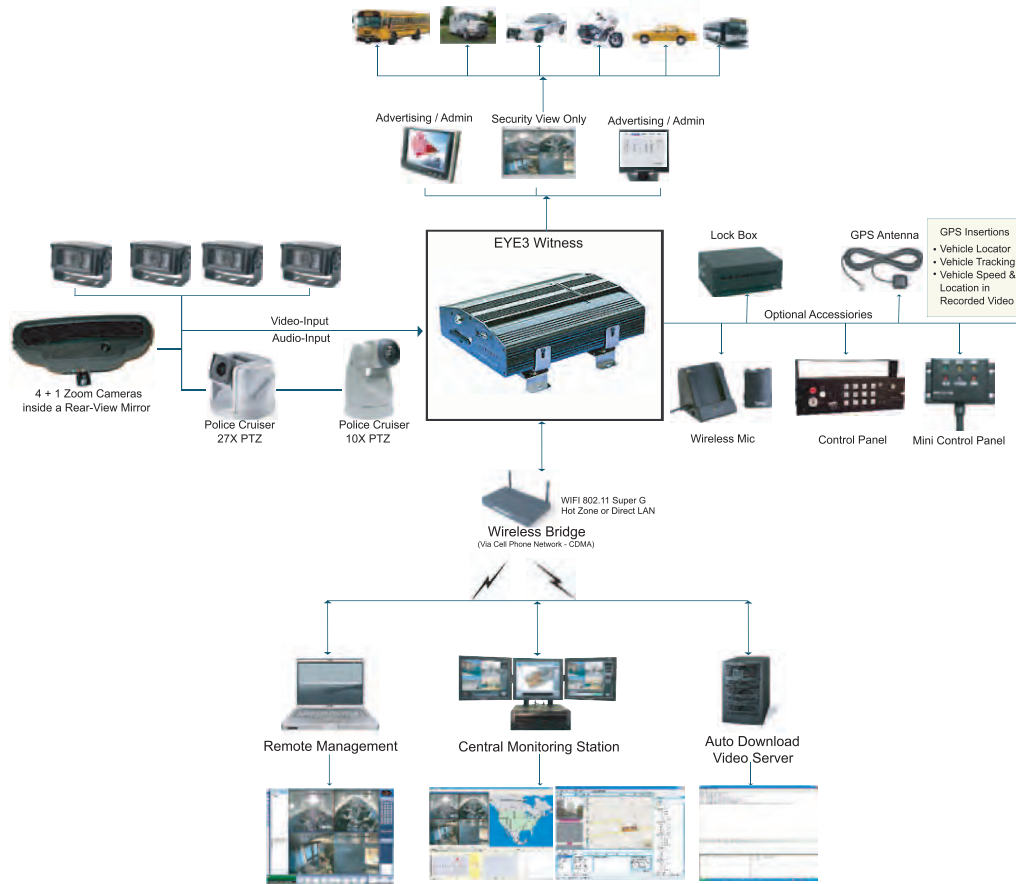


Features

- MPEG4, 120/240 FPS Recording/Viewing
- Up to 4/8 Channels of Video/Audio Recording
- Support 2.5" removable SATA HDD up to 500G
- 8 Sensors (Panic, Brake, Turning, Hazard and Reverse)
- Built-in Inertia Sensor Module
- Wireless download of Events/Video Data to Server
- Live View while in WIFI zone
- Advanced Motion Detection (Up to 16 zones per camera)
- Video/Events download to CF Card
- GPS Vehicle location and speed tracking
- Panic Button to create Emergency Events
- Advanced Analysis tool
- 4 Alarm In/Out, PTZ Controller per channel
- Run multi-media applications
(News, Safety Guidelines, Training)

Architecture & Accessories

SCALABLE
RELIABLE
EXTENSIBLE



Analysis Program



- Analysis Dashboard Quad View (Video, GPS, Speed, Events)
- Ability to play Video and/or Events downloaded from Eye3-Witness
- Import custom map of the county to view exact location of vehicle
- Driver Behavior Management using Inertia Sensor Output
- List of all sensor driven events
- Video Play synchronized with Audio and other Text Display
- Export images to .bmp file
- Integrated Live Google Map

Accessories

Inertia Sensor



HDD Case



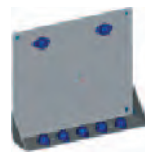
Indoor/outdoor
Cameras



DC to DC
Rectifier



Mini Control Panel



Vertical Bracket



Indoor Camera



Lock Box

Technical Specification

SCALABLE
RELIABLE
EXTENSIBLE

System Configuration:

Operating System.....Linux
 Operation Interface.....Hand-held, IR controller with On-Screen Display (OSD) for all operations of the MDVR
 Storage (GB).....Upto 500 GB removable SATA HDD (2.5-inch mobile anti-vibration and shock resistance HDD support)
 Signal System.....NTSC/PAL
 Multi-mode.....Auto-reset after power-break, auto-alarm when missing signal input.
 Record Resolution.....CIF (360×240 pixels), HD (704×240 pixels), D1 (704×480 pixels)
 Display Resolution.....TV monitor 704×576 pixels, VGA output 720×576 pixels
 Stream Standard.....ISO1449
 Image Compression.....12.5K-112.5KB/s, 25K-150KB/s
 Input Voltage.....12-volt DC or 24-volt DC (Range from 7v ~ 28v DC)
 Power Supply.....1.5 ~ 2 Amps

ALARM:

Input.....Up to 8 sensor inputs
 Seperate Inertia Sensor.....Optional

NETWORK INTERFACE:

Serial Interface.....RS485, RS232
 Network interface.....RJ-45 10M / 100M Ethernet connector
 Network Transport Protocol TCP / IP

OTHERS:

Time Clock.....Built-in clock, Perpetual calendar
 Data R/W mode.....FIFO
 Operating Temp.....0 ~ 55°C / 32F ~ 131F
 (If temperature is below 0°C, please use built-in heater)
 Humidity.....<80%
 USB.....Connection to PC for Video Download

APPROVALS:

FCC + CE
 Independent vibration tested

EYE3-XMDVR Chassis Details	
Height.....	2.64 inch
Width.....	9.94 inch
Depth.....	7.05 inch
Weight.....	5 lbs

EYE3-HMDVR-PRO4/EYE3-HMDVR-PRO8 Chassis Details	
Height.....	2.33 inch
Width.....	9.74 inch
Depth.....	6.9 inch
Weight.....	4.25 lbs

	EYE3-XMDVR	EYE3-HMDVR-PRO4	EYE3-HMDVR-PRO8
VIDEO:			
Camera Input	Up to 4 Cameras	Up to 4 Cameras	Up to 8 Cameras
Output	2 Analog and 1 VGA	2 Analog and 1 VGA	2 Analog
Display	4 Video Windows Screen	4 Video Windows Screen	8 Video Windows Screen
Image Quality	8 - Level Adjustable	8 - Level Adjustable	8 - Level Adjustable
Fwd/Playback speed	X2, X4, X1/2, X1/4	X2, X4, X1/2, X1/4	X2, X4, X1/2, X1/4
Max FPS	120 fps/system, 30 fps/chl	120 fps/system, 30 fps/chl	240 fps/system, 30 fps/chl
AUDIO:			
Audio Input	4	4	8
Audio Output	1	1	1
OTHERS:			
Removable HDD Case	NO	YES	YES
Build-In HDD	YES	NO	NO
Storage mode	2.5" HDD	2.5" HDD	2.5" HDD
Weight	5 lbs	4.25lbs	4.25 lbs

